

MONTHLY MEMBERSHIP PROGRESS REPORT

District 11 D2

Results as of: 10/31/2023

GMT:

LOCATION MICHIGAN

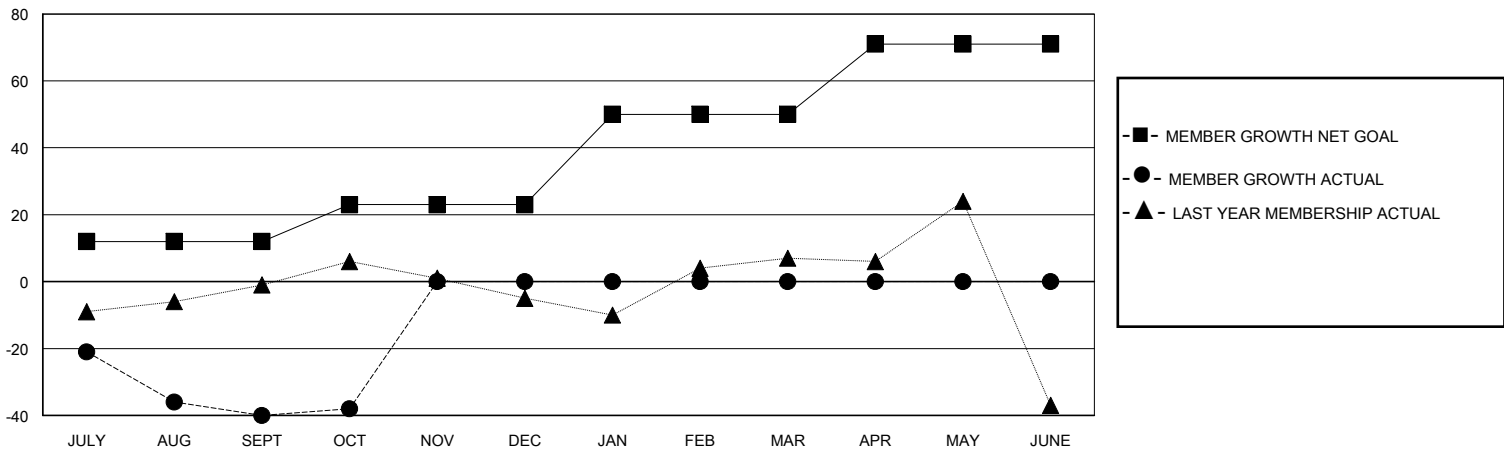
GMT CA

Clubs				Members			
RESULTS FOR 2023-2024				RESULTS FOR 2023-2024			
QUARTER	NEW CLUB GOAL	NEW CLUBS	DROPPED CLUBS	QUARTER	MEMBER GROWTH NET GOAL	MEMBER GROWTH ACTUAL	DROPPED MEMBERS ACTUAL (including transfers)
JULY/AUG/SEPT	0	0	0	JULY/AUG/SEPT	12	27	60
OCT/NOV/DEC	1	0	0	OCT/NOV/DEC	11	22	14
JAN/FEB/MAR	0	0	0	JAN/FEB/MAR	27	0	0
APR/MAY/JUNE	0	0	0	APR/MAY/JUNE	21	0	0

GOALS AND ACTUAL NEW CLUBS CUMULATIVE



GOALS AND ACTUAL MEMBERS CUMULATIVE



DROPPED CLUBS: 0	13 CLUBS OF 46 ADDED 1 OR MORE NEW MEMBERS	GENDER DISTRIBUTION
		MALE 883 (70.47%)
		FEMALE 369 (29.45%)
DROPPED MEMBERS	CLICK HERE FOR CUMULATIVE MEMBERSHIP DATA	TOTAL FAMILY UNIT MEMBERS 200
DECEASED 10		FAMILY MEMBERS PAYING HALF DUES 103
CLUB CANCELLED 0		
OTHER 64		
TOTAL 74		